



People's expectation toward individual mobility requires more than just a convenient means of transportation. The old understanding of cars has become outdated. A car represents individuals' lifestyles, and it became an integral part of their lives. At the same time, the automobile industry has experienced seismic change. Hyundai Motor Company has grown rapidly to become one of the largest automakers, backed by world class production capability and superior quality. We have now reached a point where we need a qualitative approach to bring bigger ideas and relevant solutions to our customers. This is an opportunity to move forward and we have developed a new brand slogan that encapsulates our willingness to take a big leap. Led by our new slogan and the new thinking underlying it, we will become a company that keeps challenging itself to unlock new possibilities for people and the planet.

Hyundai Motor Company
<http://worldwide.hyundai.com>
AUS. RHD GL 1610 ENG. WD
Copyright © 2016 Hyundai Motor Company. All Rights Reserved.

Driving innovation.

IONIQ hybrid



I see
a changing world.

Moving in a new direction

When I look at my IONIQ hybrid, I see the future of mobility and the chance to make a difference. IONIQ hybrid is my choice mainly because of its amazing style and low CO₂ emissions: just 79g/km. So, I am making a difference and helping create a cleaner, better world. What's more, driving IONIQ is pure fun.

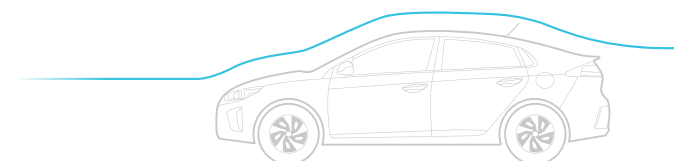




The future is here.

I really admire the elegance and simplicity of my IONIQ. It looks futuristic and inside, it's brimming with innovative features. IONIQ slices through the wind like no other car aided by its low coefficient of drag that allows me to enjoy a whisper quiet ride and great fuel efficiency.

Aerodynamic Cd **0.24**



Radiator grille

The signature hexagonal grille features computer-controlled flaps that close automatically to improve aerodynamics.



LED Daytime running lights (DRL)

DRLs have a stylish, high-tech look thanks to highly efficient LEDs that deliver maximum brightness while drawing minimal current.



Rear bumper

Two-tone bumper has a graphic insert to add a sporty touch and provide continuity with the front end design.



The GL model with optional equipment is shown here.

Feel that emotional connection.

IONIQ's interior is a masterpiece of emotional design: elegantly simple and pleasant to the touch but packed with innovative features such as wireless phone charging. The D-cut steering wheel provides a sporty look but also makes for easier entry and egress.

Supervision cluster with 4.2" color LCD

The cluster offers a wide range of useful information and is designed for intuitive understanding and confident driving. The speedometer has a pleasant 3D effect.

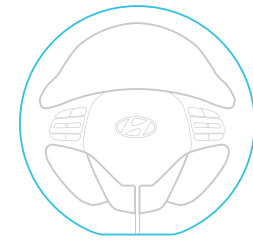


Smart cruise control (SCC)

SCC maintains the pre-set speed and a safe distance between vehicles by regulating the throttle and automatically applying the brakes. SCC disengages below 10km/h.



D-cut steering wheel



Center console

The brilliant layout and packaging of the console keeps me well organized. There's enough space for my tablet, smartphone and all kinds of other travel essentials.

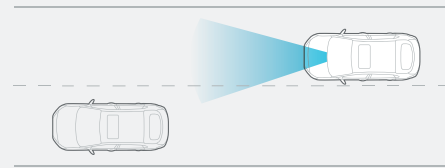


Safer than ever.

Inside IONIQ, I know I'm safer than ever. It's like having my own personal bodyguard beside me whenever I'm behind the wheel of my IONIQ: It gives me total peace of mind. With LDWS, AEB and other advanced safety systems, IONIQ provides numerous layers of protection so that I can drive with complete confidence.

Lane departure warning system (LDWS)

LDWS uses optical sensors to continuously monitor the lane markings on the roadway. If I begin to depart my traffic lane without a prior lane change signal, LDWS will automatically issue audible and visual alerts reminding me to take corrective action and help keep me safe.



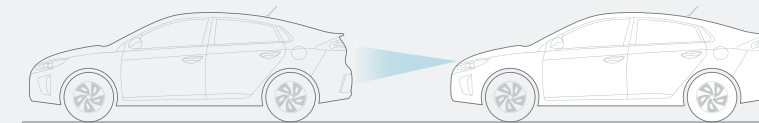
Automatic emergency braking (AEB)

Representing one of the most important advancements in automotive safety, AEB monitors the vehicle ahead and will automatically apply the brakes and bring IONIQ to a safe stop thus minimizing the risk of a collision. AEB also includes pedestrian detection capabilities.



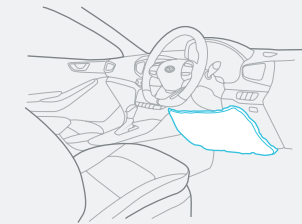
Smart cruise control (SCC)

SCC does much more than maintain a preset speed. The smart function automatically maintains a safe distance between me and the car ahead by using throttle and brake intervention. SCC automatically deactivates below 10km/h.



7-airbag system

It's reassuring to know that the 7-airbag system offers comprehensive protection. There's a pair of front airbags for my front passenger and me plus an airbag for my knees. A pair of side airbags (front seats only) and full-length curtain airbags defend against side collisions.



The GL model with optional equipment is shown here.



Kappa 1.6L Atkinson-cycle GDi engine

The best of both worlds.

Under IONIQ's hood two hearts beat as one: a 32kW electric motor and a Kappa 1.6-liter Atkinson GDi engine. IONIQ switches seamlessly between the conventional engine and electric motor. Gasoline direct injection extracts the maximum amount of energy from each droplet of fuel while delivering 105PS.

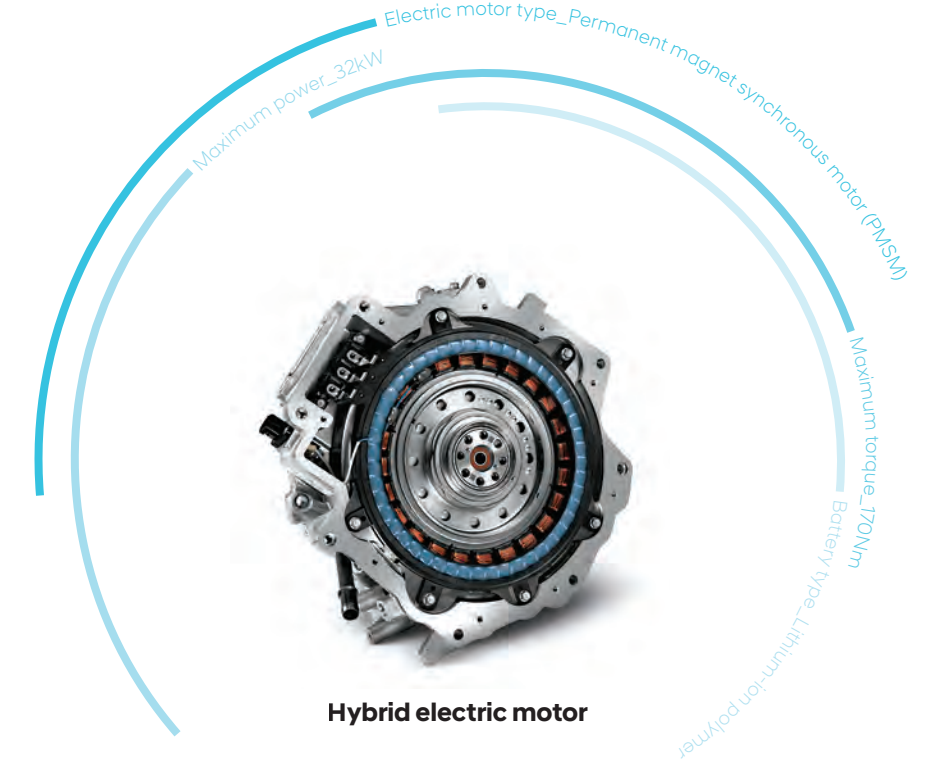
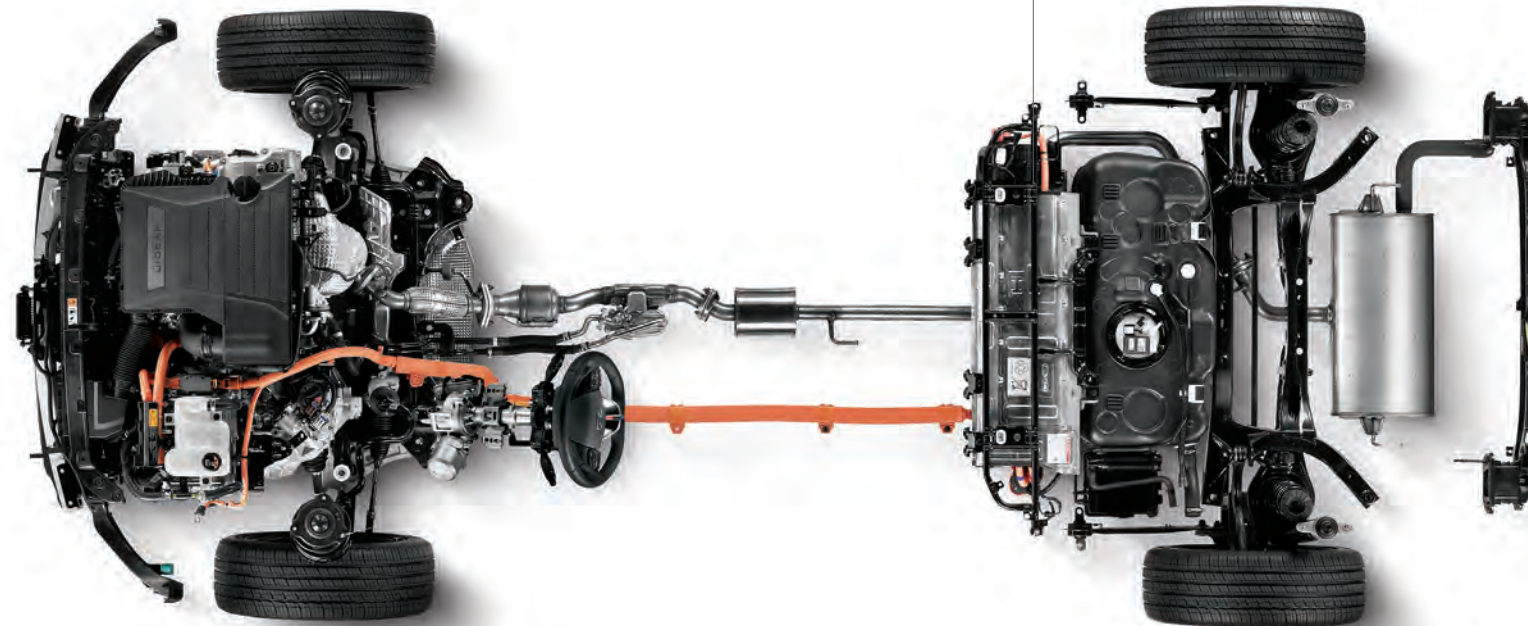


Advanced high-strength steels

The usage of advanced high-strength steel alloys has been expanded to 53 percent of the body structure. To attain unprecedented levels of structural rigidity, critical components were fabricated using advanced hot stamping technology.

Low center of gravity

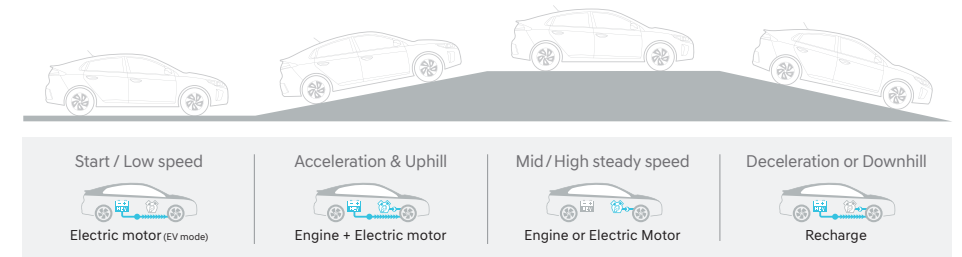
By mounting the battery under the seats, IONIQ is able to attain an exceptionally low center of gravity. This greatly enhances agility and helps make IONIQ so much fun to drive.



Hybrid electric motor

Predictive energy management

The highly advanced battery management system collects and analyzes data on your travel routes, driving style and habits for optimal energy storage. Advanced algorithms are employed to switch seamlessly between electric and gasoline propulsion modes and recover braking energy to recharge the batteries.





Packages

The GL model with optional equipment is shown here.



Headlamps



Rear combination lamps
Rear-view camera



Safety window controls



Aero blade wipers
Rear spoiler



Heated steering wheel



5.0" LCD audio system (CDP/MP3/Radio)
Dual-zone auto air conditioning system



Seat folding system (6:4 type)



Front seat warmers
Front seat adjustment

Exterior colors



Polar white (WAW)



Platinum silver (T8S)



Aurora silver (TS7)



Phantom black (NKA)



Iron gray (YT3)



Demitasse brown (RB4)

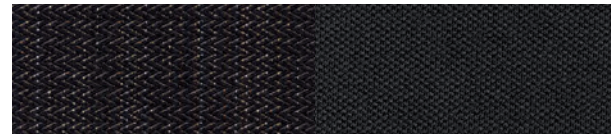


Marina blue (N4B)



Phoenix orange (RY9)

Interior colors



Woven



knit



Wheels



15" alloy wheels

Specifications

ENGINE

| | |
|--------------------------|---------------------|
| Type | GDi gasoline engine |
| Displacement (cc) | 1,580 |
| Max. power (PS / rpm) | 105 / 5,700 |
| Max. torque (kg-m / rpm) | 15.0 / 4,000 |

ELECTRIC MOTOR

| | |
|------------------|---|
| Type | Permanent magnet synchronous motor (PMSM) |
| Max. power (kW) | 32 |
| Max. torque (Nm) | 170 |
| Battery type | Lithium-ion polymer |

DIMENSIONS

| | | |
|--------------------------|-----------------------------|---------------|
| Head room (mm) | Front / rear (w/o sunroof) | 994 / 950 |
| Leg room (mm) | Front / rear | 1,073 / 906 |
| Shoulder room (mm) | Front / rear | 1,425 / 1,396 |
| Luggage capacity (liter) | Up to roof | 550 |
| | Rear seats down, up to roof | 1,505 |

- The above values are results from internal testing and are subject to change after validation.
- Some of the equipment illustrated or described in this catalog may not be supplied as standard equipment and may be available at extra cost.
- Hyundai Motor Company reserves the right to change specifications and equipment without prior notice.
- The color plates shown may vary slightly from the actual colors due to the limitations of the printing process.
- Please consult your dealer for full information and availability on colors and trims.

Unit : mm



Overall width 1,820
Wheel tread 1,563



Overall length 4,470
Wheel base 2,700

Overall height
1,450



Wheel tread 1,577