

Dealer stamp



# Accent





# All you ever wanted.

The all-new Accent



**Accent is big on style and features**

The all-new Accent gives you everything you have ever wanted in a family car-and much more. The style is strong and confident, equal to the best in the business. Inside, Accent is surprisingly spacious and offers loads of cargo space, handy for those long trips. And when it comes to performance and safety, Accent checks all the boxes, leaving nothing to be desired. Accent: It's the start of a great journey.





# The beauty is in the details.

Take the ordinary and transform it into the extraordinary: That's the beauty of Accent.  
The latest LED and projection technologies have been applied to the front lighting package to maximize visibility. Chrome detailing on the front grille and around the fog lamps take Accent to a higher level.

Projection headlamps with LED position & DRL lamps



Fog lamps



17" Alloy wheels



LED rear combination lamps







## Feel the emotional connection.

It just feels right. From the moment you step inside, the touch points and visual cues look and feel familiar. Everything operates intuitively like you would expect. That's a mark of good design. Materials have been carefully selected for their aesthetic qualities but at the same time meet the highest durability standards.



Steering wheel includes remote control functions for audio, cruise control and Bluetooth

### 5.0" Multimedia display

Multi-function LCD provides backup camera image, time/date, MP3 player status, AM/FM radio tuning and Bluetooth connectivity for mobile phone and personal audio devices.



### Automatic climate control

Simply set the desired temperature and the powerful blower provides air conditioning, heating and ventilation to keep you perfectly comfortable regardless of the outside weather conditions.



### Connectivity (USB/AUX)

Connect smart devices and enjoy them through the Accent's speaker system. 12V power outlet and lighter included.





# Discover the freedom of the open road with Accent.

Accent's 1.6 liter Gamma engine is one of Hyundai's most remarkable powerplants, acclaimed for its efficient and reliable design. Mated to a 6-speed transmission and incorporating a dual overhead cam with variable valve timing, it purrs like a kitten to deliver pure driving pleasure. Push button start and a central gauge cluster with Supervision display technology further elevate the Accent driving experience.



## Gamma 1.6 MPI Gasoline

121

HP/6,300rpm

15.4

kg.m/4,850rpm

## Kappa 1.4 MPI Gasoline

99

HP/6,000rpm

13.5

kg.m/4,000rpm



## Push-button start / Smart key

The smart key ends the search for the keyhole! Includes push button start, speed sensing automatic door locks, remote lock/unlock for the doors and trunk plus a burglar alarm.

## 6-speed automatic transmission

You will hardly notice this 6-speed gearbox doing its work. Automatic shifting is quick, smooth and quiet but also very convenient. Its efficient design helps maximize fuel economy.



## Supervision cluster

The Supervision cluster, with its circular rev counter and speedometer, features white backlighting for razor-sharp clarity and readability. Includes an integrated 3.5-in monochrome display with trip computer, refueling calculator and oil change reminder.

## 6-speed manual transmission

For drivers who put economy above all else, the 6-speed manual is the perfect choice. Clutch operation is easy and predictable and as you shift through the gates, there's a nice, precise feel.







## Safe and secure.

Accent's super-strong body structure offers unparalleled protection. Critical areas are reinforced with ultra high-tensile strength steel so that Accent meets the very latest crash safety standards of the National Highway Traffic and Safety Administration of the United States. Six airbags and the Anti-locking Brake System with Electronic Stability Control means you will be well-prepared in case the worst should happen.



### Rearview camera

This simple system erases all doubt about who or what is behind you when backing up. Graphic overlay serves as a parking aid to help avoid scrapes and scratches.



### 6-airbag system

6-airbags provide all-round protection. One each for the driver and front-seat passenger, two curtain airbags running the length of the cabin, plus two side curtain airbags.



### Hillstart Assist Control

Stopping and starting on very steep road can be stressful and potentially dangerous. HAC prevents the car from accidentally rolling backward whenever the brake pedal is released on a hill.





# Features

## Cascade grille in chrome and black finish

The uniquely shaped cascade grille is a Hyundai design signature that declares membership in the Hyundai family.

## Premium chrome molding

A light touch of chrome along the belt-line amplifies the radiance factor. The chrome finish is much easier to maintain mirror chrome.

## Chromed door handles

They add a small touch of luxury and are pleasantly eye-catching. Included with the SmartKey option package.

## Side mirrors with built-in LED indicator lamps

Side mirrors feature heating elements, electric folding and built-in LED turn indicator lamps for greater safety and convenience.

## Smart trunk

Stand close to the trunk and in three seconds the lid opens automatically without pressing any key button. The smart trunk feature is easily deactivated at any time.

## High-mounted stop lamp

The high mounted stop lamp is located on the rear parcel tray for easy bulb changes whenever required.

## Luggage space

The trunk offers an impressive 387 liters (SAE) of storage space and if that's not enough, the rear seats can be folded down for even more room. A full-size spare tire is included.

## Flat-folding 60:40-split rear seats

Accent's versatility is surprising: It can handle a mix of passenger and cargo hauling duties thanks to the flat-folding rear seats.

## Sunglass case

A handy place for safely storing your pair of pricey sunglasses or any other odds and ends.

## Driver seat height adjuster

Adjusting the height of the seat cushion could not be easier or more intuitive with this lever which features a simple and sturdy design.

## Rheostat & Electronic Stability Control OFF switch

Controls the illumination level of the central gauge cluster to suit your personal preferences. The ESC OFF hands control back to you.

## Sliding armrest

The center console armrest cover moves forward to enhance your comfort.



## Exterior colors



Clear white (UD)



Snow white pearl (SWP)



Silky silver (4SS)



Ice wine (W4Y)



Azure blue (B2R)



Urban gray (U4G)



Sunset orange (SN4)



Fiery red (R4R)



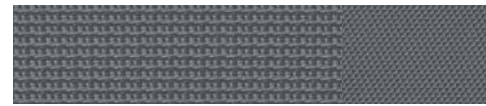
Aurora black (ABP)

## Interior colors

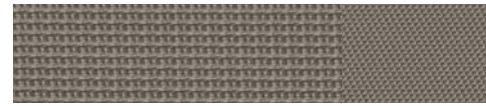
### GL



Woven black



Woven gray

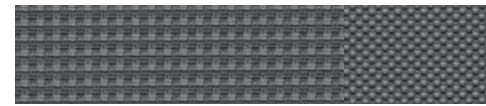


Woven beige

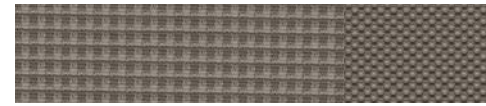
### GLS



Woven black



Woven gray

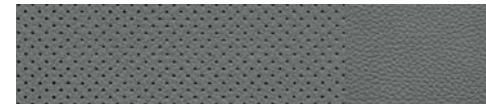


Woven beige

### GLS option



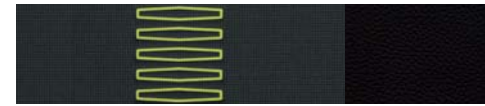
Leather black



Leather gray



Leather beige



Woven+Leather lime



Woven+Leather red



Leather orange brown



15" wheels cover  
15" alloy wheels  
17" alloy wheels

## Specifications

Type	Gamma 1.6 MPi Gasoline	Kappa 1.4 MPi Gasoline
Engine type	4-Cylinder DOHC	4-Cylinder DOHC
Displacement (cc)	1,591	1,368
Max. Power (HP / rpm)	121 / 6,300	99 / 6,000
Max. Torque (kg-m / rpm)	15.4 / 4,850	13.5 / 4,000
<b>Brakes</b>		
Front	Ventilated disc	
Rear	Drum / Disc	
<b>Suspension</b>		
Front	McPherson strut type	
Rear	Coupled torsion beam axle	
<b>Tire</b>	185/65R15, 205/45R17	
<b>Dimensions</b>		
Head room (mm)	Front / Rear	989 (1,031) / 948
Leg room (mm)	Front / Rear	1,070 (1,120) / 850 (770)
Shoulder room (mm)	Front / Rear	1,375 / 1,365

- The above values are results from internal testing and are subject to change after validation.
- Some of the equipment illustrated or described in this catalog may not be supplied as standard equipment and may be available at extra cost.
- Hyundai Motor Company reserves the right to change specifications and equipment without prior notice.
- The color plates shown may vary slightly from the actual colors due to the limitations of the printing process.
- Please consult your dealer for full information and availability on colors and trims.



Overall width 1,729  
Wheel tread 1,522



Overall length 4,385  
Wheel base 2,580



Overall height 1,475

Wheel tread 1,529

Unit : mm