



سكايلاين للسيارات
SKYLINE AUTOMOTIVE



Grand Santa Fe





- HID headlamps & LED front fog lamps
- 19" alloy wheels
- LED rear combination lamps

CONTROL SYSTEMS THAT IMPROVE THE CONVENIENCE OF DRIVING

Grand Santa Fe delivers a comfortable ride under diverse road conditions and driving situations with convenient driver assistance systems that are fully automatic at times to ensure the responsiveness elicited by the driver.



Advanced smart cruise control (ASCC)

Advanced smart cruise control (ASCC) is a driving system that not only maintains a safe distance from cars in front, but also elevates speed automatically to preset levels after a full stop when the car in front takes off.



Drive mode control system

Grand Santa Fe conveniently offers a choice of 3 driving modes – normal, sports, and eco – at a touch of a button to match drivers' mood and driving conditions.



Blind spot detection (BSD)

Blind spot detection (BSD) recognizes and alerts the driver about vehicles in blind spots or fast-approaching vehicles from the back.



Down-hill brake control (DBC)

Down-hill brake control (DBC) is a system that automatically controls Grand Santa Fe's speed on steep declines to control braking. It is one of Grand Santa Fe's features that ensure stable driving under a variety of road conditions.



With ESC



Without ESC



Electronic stability control (ESC) with 4-wheel drive assistance control

Electronic stability control (ESC) with 4-wheel drive assistance control is a function that minimizes the risk of running off course in the event of entering a curve at high speeds. 4-wheel-drive assistance control distributes traction to the rear wheels while Electronic stability control (ESC) exerts braking in the inner rear wheel to help control the vehicle in advance, at a stage before conventional Electronic stability control (ESC) would have been activated. They deliver more stable driving performance by helping drivers control their vehicle at will and improving driving agility.

RIGOROUS AND METICULOUS SAFETY FEATURES

Thoughtful features preempt large and small hazards that can occur while driving. Stringent safety measures protect you in every drive.



Front & rear parking assist system (PAS)

Sensors in the front and rear bumpers help to prevent collisions and to park safely by warning the driver about objects that are close by when the vehicle is in reverse.



6-airbag system

Grand Santa Fe is equipped with front airbags and 2-side airbags, as well as curtain airbags, to minimize passenger injuries in the event of collisions.



LED Daytime running lights (DRL)

LED Daytime running lights (DRL) remain illuminated during the day while the vehicle is being operated to warn pedestrians and other drivers about the presence of the car.



Rear-view display system

The rear-view display system promotes safe driving and parking by enabling drivers to see the back of the car through the display while backing up or parking.





3.3 V6 MPI
gasoline engine **10.9**ℓ/100km

| | |
|-------------|-----------------------|
| Max. power | 270 ps / 6,400 rpm |
| Max. torque | 32.4 kg-m / 5,300 rpm |



3.3 V6 GDI
gasoline engine **10.3**ℓ/100km

| | |
|-------------|-----------------------|
| Max. power | 286 ps / 6,400 rpm |
| Max. torque | 34.4 kg-m / 5,200 rpm |



2.2 CRDi
diesel engine **7.9**ℓ/100km

| | |
|-------------|-------------------------------|
| Max. power | 193 ps / 3,800 rpm |
| Max. torque | 45.0 kg-m / 1,750 ~ 2,750 rpm |

Every drive leaves you with a lasting impression from the eco-friendly technology that delivers dynamic power with minimal fuel. A smooth and silent ride, conceived to meet the needs of urban and suburban drivers, increases satisfaction after every ride. *Fuel economy figures are based on EU-2 standards.



STATE-OF-THE-ART DRIVER SPACE PERFECTED WITH HUMAN SENSIBILITY

Convenient state-of-the-art technology is coupled with subtle details that enhance the pleasure of every drive.



Supervision cluster with color TFT LCD

A sharper and more sophisticated supervision cluster with a 4.2" color TFT LCD facilitates a wide range view of driving and vehicle status information and enhances Grand Santa Fe's futuristic interior design.



Panorama sunroof

Grand Santa Fe's Panorama sunroof offers greater airiness than conventional panorama sunroofs by eliminating the center beam of headlining and using motor-driven roller blinds.



Audio system

The audio system features 6 speakers for outstanding, life-like reproduction and enjoyment of diverse media, including radio, CD, and MP3 files. Options include an LCD and optimally placed function buttons that enhance the convenience of listening to music.



Steering wheel remote control system

Various switches are embedded in the steering wheel so that drivers can easily operate audio and Auto cruise control functions while driving without being distracted from the road.





SEAT VARIATIONS

Grand Santa Fe guarantees optimal efficiency in all its seats, from the 1st row to the 3rd, with a practical interior layout that provides convenience and comfort no matter how it is configured. For 7 seats, 2nd row seats can be divided into a 4:2:4 ratio and both backrows can be folded flat to accommodate diverse types of cargo. The 6 seat configuration provides extra room and armrests for 2nd row passengers, while 3rd row seats can be folded flat to ensure maximum versatility. All you need to do now is get your plans together for a family trip with Grand Santa Fe.



Integrated memory system (IMS)

An Integrated memory system (IMS) allows recalling up to two profiles for automatic seat and outside mirrors adjustment.



2nd row seats

The 2nd row seats fold in a 4:2:4 ratio for even greater efficiency, accommodating different number of passengers and cargo of different sizes and shapes.



2nd row seat folding system

Rear seat layout is designed to provide maximum comfort and utility. The 2nd row seat folding system allows the convenient management of cargo space at the pull of a lever.



COMFORTABLE AND AMPLE INTERIOR SPACE

Efficient seat arrangement, an effective ventilation system, and thoughtful convenience features optimize the relaxing and generous cabin space.



Comfortable rear cabin space

Grand Santa Fe enhances the comfort of rear seat passengers with diverse convenience features. It has independent heating and air conditioning, as well as a USB charging port, for 3rd row passengers, and cup holders for 2nd row passengers in 6-seat models to relax and enjoy drinks. 3rd row seats can be folded to create a large trunk space.



Smart tailgate system

Standing near the perimeter of the tailgate for 3 seconds with the smart key, the tailgate opens automatically, providing convenient access especially when both hands are full.



Full auto air conditioning system

The driver and the passenger can each set their own temperature, while a ventilation system in the 2nd row creates a pleasant environment for those seated in the back.



Seat warming & cooling air ventilation

Seat ventilation in the front seats circulates air naturally for greater comfort, while seat warmers in the 1st and 2nd row ensure a warm and cozy ride.



INTERIOR TRIMS



Gray two-tone > Seat material



Woven 1 GL



Woven 2 GLS



Leather GLS option

Gray two-tone > Garnish



Zebrawood GL



Hexagonal rush GLS



Black one-tone > Seat material



Woven 1 GL



Woven 2 GLS



Leather GLS option

Black one-tone > Garnish



Walnut GL



Hexagonal rush GLS



Beige two-tone > Seat material



Woven 1 GL



Woven 2 GLS



Leather GLS option

Beige two-tone > Garnish



Poplar GL



Hexagonal rush GLS

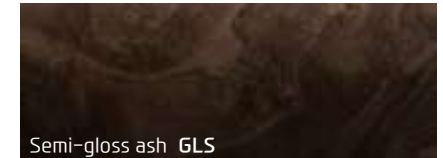


Burgundy color package > Seat material



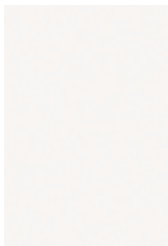
Leather GLS option

Burgundy color package > Garnish



Semi-gloss ash GLS

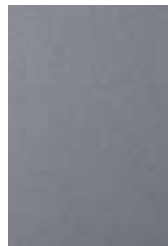
EXTERIOR COLORS



YAC
Creamy white



M8S
Sleek silver



P2S
Hyper metallic



Y9Y
Mystic beige



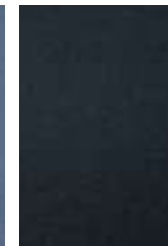
VR4
Red merlot



YN9
Tan brown



VU9
Mineral blue



W9U
Ocean view



TU9
Space blue



RB5
Timeless black

SPECIFICATIONS

| Engine | | | | | | |
|----------------------------|---|--|----------------------------|-------------|------------------------|--|
| Type | 3.3 V6 MPi gasoline engine | | 3.3 V6 GDi gasoline engine | | 2.2 CRDi diesel engine | |
| Displacement (cc) | 3,342 | | 3,342 | | 2,199 | |
| Max. power (ps / rpm) | 270 / 6,400 | | 286 / 6,400 | | 193 / 3,800 | |
| Max. torque (kg-m / rpm) | 32.4 / 5,300 | | 34.4 / 5,200 | | 45.0 / 1,750~2,750 | |
| Suspension | | | | | | |
| Type | Front / Rear | McPherson strut type / Multi-link | | | | |
| Shock absorber | Front / Rear | Strut type (gas) / Shock absorber type (gas) | | | | |
| Brakes | | | | | | |
| General | Dual-diagonal, split-circuit, power-assisted braking system with EBD | | | | | |
| Front brake type | Φ320 ventilated disc, floating caliper brakes with pads wear warning device | | | | | |
| Rear brake type | with ABS | Φ302 (2-wheel drive / 4-wheel drive) solid disc, floating caliper brakes with pads wear warning device / Φ190 (2-wheel drive / 4-wheel drive) high torque parking brake | | | | |
| ABS | 4-wheel electronic, 4-sensor, 4-channel electronic brake distribution, brake torque distribution system (EBD) | | | | | |
| Drive train | | | | | | |
| Fuel consumption | CO ₂ level (g/km) | 2-wheel drive | 259 (EU-2) | - | - | |
| | | 4-wheel drive | 259 (EU-2) | 246 (EU-2) | 206 (EU-2) | |
| | Combined (ℓ/100km) | 2-wheel drive | 10.9 (EU-2) | - | - | |
| | | 4-wheel drive | 10.9 (EU-2) | 10.3 (EU-2) | 7.9 (EU-2) | |
| Tire | 235 / 60 R18, 235 / 55 R19 | | | | | |
| Fuel tank capacity (liter) | 71 | | | | | |
| Transmission | 6-speed automatic | | | | | |
| 4-wheel drive system | Active on-demand | | | | | |

- The above values are results from internal testing and could be changed after validation.
- Some of the equipment illustrated or described in this catalog may not be supplied as standard equipment and may be available at extra cost.
- Hyundai Motor Company reserves the right to change specifications and equipment without prior notice.
- The color plates shown may vary slightly from the actual colors due to the limitations of the printing process.
- Please consult your dealer for full information and availability on colors and trims.

DIMENSIONS

Unit : mm



1,628
1,885



955 | 2,800 | 1,150
4,905

1,685
(including roof rack : 1,695)



1,639

WHEELS



18" alloy wheels / 19" alloy wheels



سكايلاين للسيارات
SKYLINE AUTOMOTIVE



**For more information,
contact us today!**

Showroom Address

15 New Doha, B-Ring Road, Handasa Street, P.O. Box 37972, Doha-Qatar

Opening Hours

Saturday to Thursday **8:30 AM to 9:00 PM**, Friday **4:00 PM to 9:00 PM**

Phone +974 4489 1111

Visit skyline-qatar.com